



Children's Education Society (Regd.)

The Oxford College of Pharmacy

(Recognized by the Govt. of Karnataka, Affiliated to Rajiv Gandhi University of Health Sciences, Karnataka;

Approved by Pharmacy Council of India, New Delhi)

Accredited by NAAC and International Accreditation Organization (IAO)

7.1.3 Facilities in the Institution for the management of the following types of degradable and non-degradable waste

INDEX

S No	Particulars	Page No.
1	Solid Waste Management	1-2
2	Photographs on Solid & Liquid Waste Management	3-4
3	Photographs on E-waste Management	5
4	Water Recycling System	6
5	Photographs on Hazardous Chemical Waste Management	7
6	Bio-Medical Waste Management	8

P. Padma

PRINCIPAL

The Oxford College Of Pharmacy
No 619, 1st Cross, Begur Road, Hongasandra
Bangalore - 560 068



1st Cross, Begur Road, Hongasandra, Bengaluru -560 06
1754694; Fax: +91- 80 -61754699; www.theoxford.edu
pharmacyprincipal@theoxford.edu; info@theoxford.edu;



Children's Education Society (Regd.)

The Oxford College of Pharmacy

(Recognised by the Govt. of Karnataka, Affiliated to Rajiv Gandhi University of Health Sciences, Karnataka; Approved by Pharmacy Council of India, New Delhi)

Accredited by NAAC and International Accreditation Organization (IAO)

7.1.3 Facilities in the Institution for the management of the following types of degradable and non-degradable waste

1. Solid waste management

The Institution implements solid waste management by enforcing the waste segregation rules. Solid waste includes both biodegradable and non-biodegradable components. The non-biodegradable solid waste generated in the campus include, paper, plastics, metal cans etc. Biodegradable waste includes food waste, vegetable peels, leaves etc.

Dustbins have been provided at designated locations in the campus. Housekeeping/sweepers are allotted to each floor who manage all the waste generated in the campus. All waste/garbage from college and hostel is collected, segregated and disposed of in a proper manner.

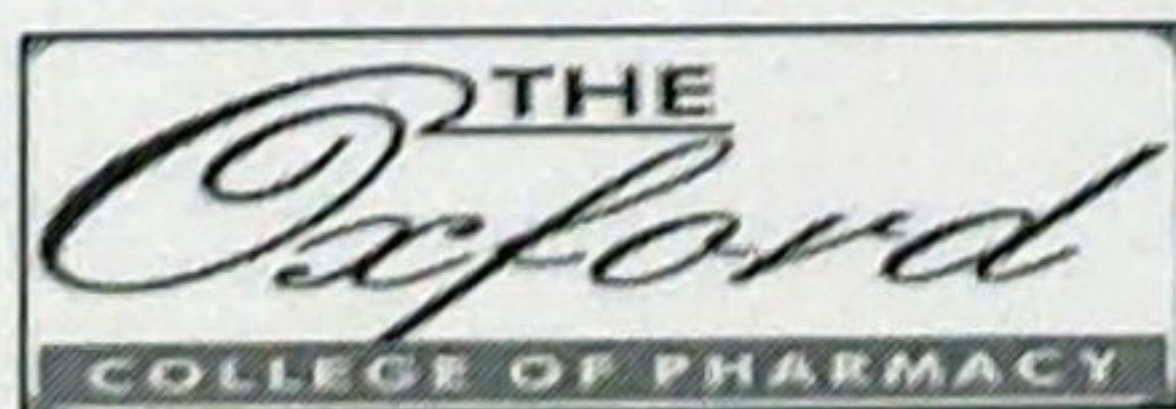
Wastes like old newspapers and records is sold to proper recycling agencies/vendors. There is no hazardous waste and radioactive waste is generated inside the campus.

Cleaning activities are carried out using chemicals wherever necessary. Every day, BBMP collects solid waste, and it uses an eco-friendly waste management system to handle any minor amounts of leftover waste.

The main objective of the solid waste management system in The Oxford College of Pharmacy is to promote the conservation and environment management in the Institute Campus. The purpose of the current available system is:

1. To introduce and aware students to real concerns of environment sustainability.
2. To secure the environment and cut down the threats posed to human health by analysing the pattern and extent of resource use on the campus.

The waste generated in the campus includes paper, old assignment books and blue books wrappers, glass, metals, paper, plastics, Old newspapers, used papers and files, workshop scrap etc. are given for given to external agencies where they segregate and dispose/ recycle according to the nature recycling to external agencies. Glass, metals, plastic

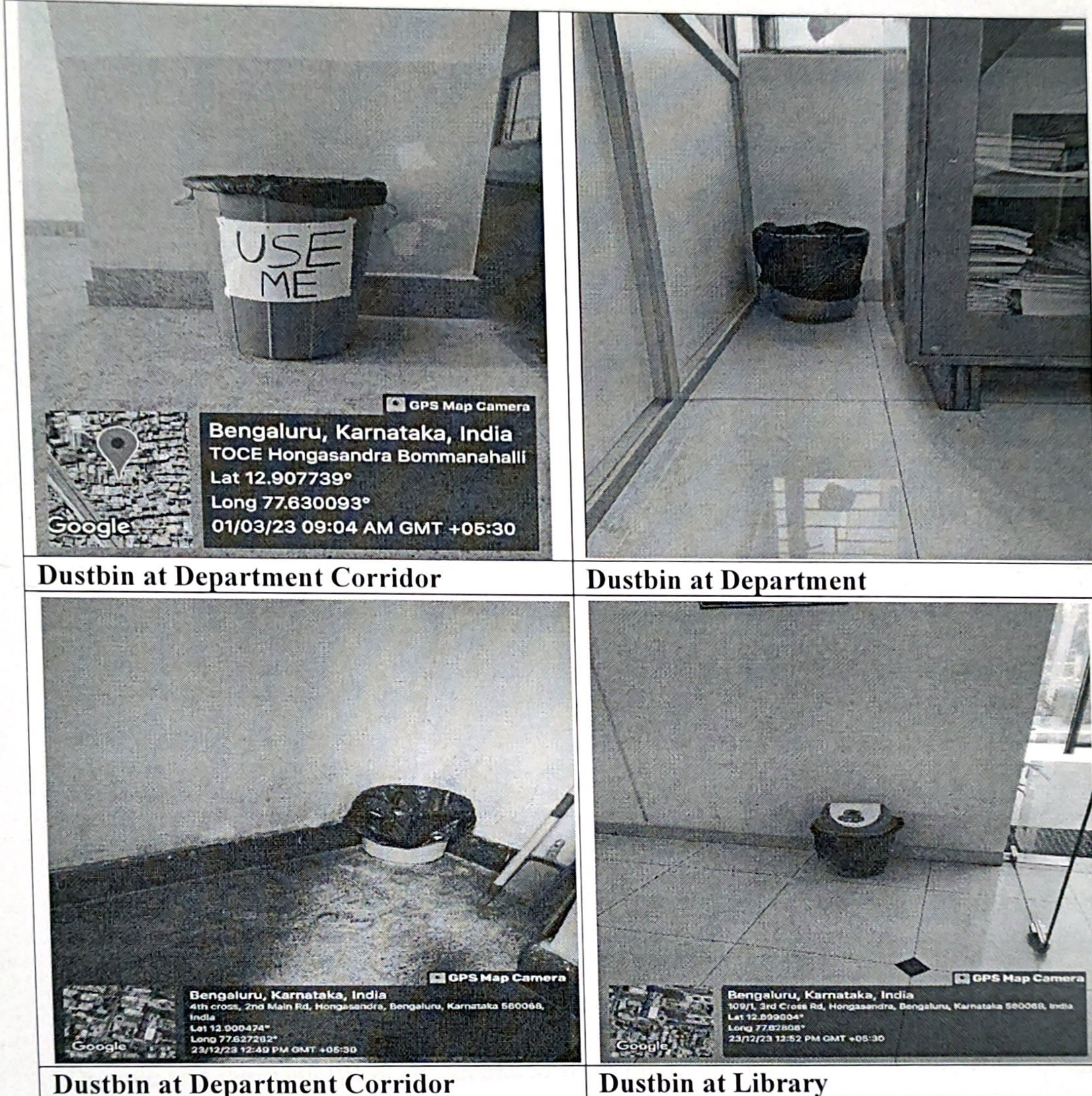


No.6/9, 1st Cross, Begur Road, Hongasandra, Bengaluru -560 068
☎: +91- 80 - 61754694; Fax: +91- 80 -61754699; www.theoxford.edu
e-mail: pharmacyprincipal@theoxford.edu; info@theoxford.edu;

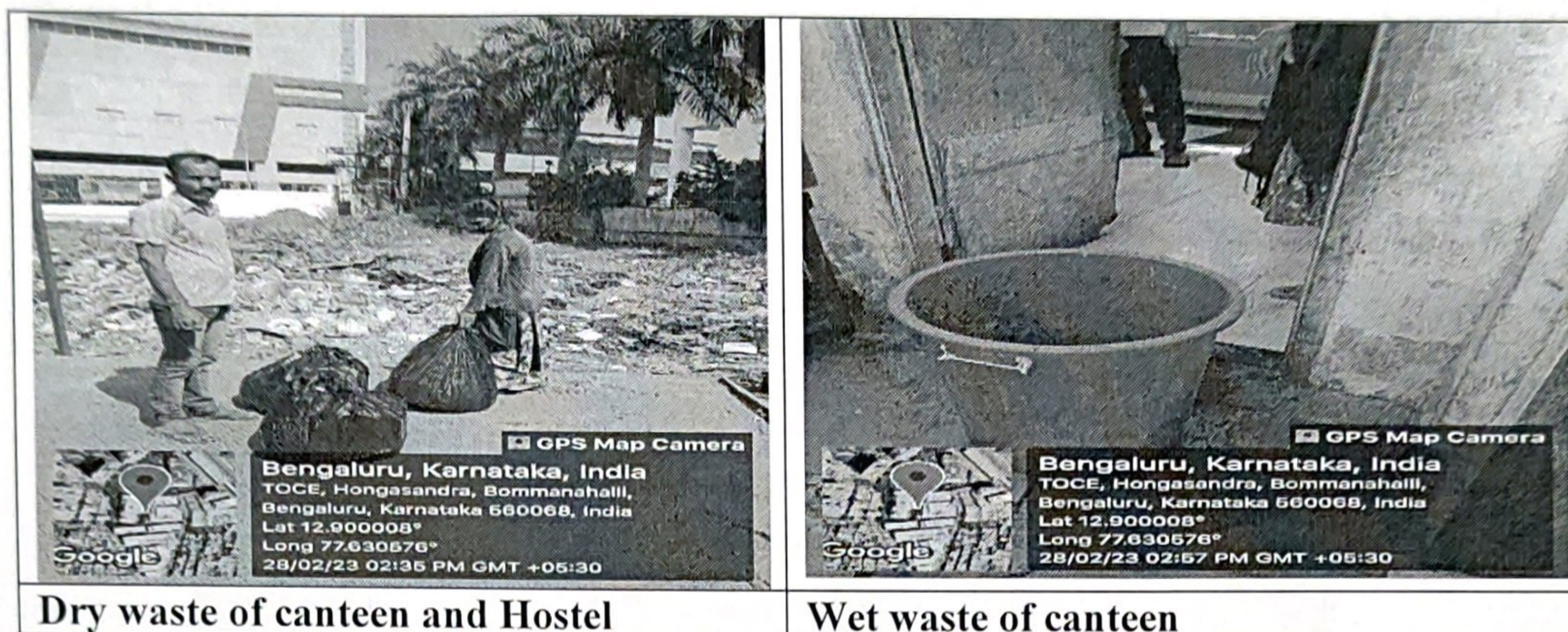
P. Padma
PRINCIPAL

The Oxford College Of Pharmacy
No 6/9, 1st Cross, Begur Road, Hongasandra
Bangalore - 560 068

and other non- biodegradable wastes are of the waste. Sanitary Napkin Incinerators have been installed in the girls' hostels to facilitate disposal of sanitary napkins in an environment-friendly way. We encourage students and staff not to use plastic items. Also we encourage them to reuse the plastic items.



2. Photographs on Solid & Liquid Waste Segregation



Liquid Waste Management

The Institution follows a systematic procedure for proper management and disposal of liquid waste. The waste water generated from the sanitary facilities is disposed through a dedicated waste water pipeline. The pipeline drains the waste water into the water chamber. Then, from waste water chamber, it is sent to sewage treatment plant through underground pipes. The sources of waste water in the college campus are as follows,

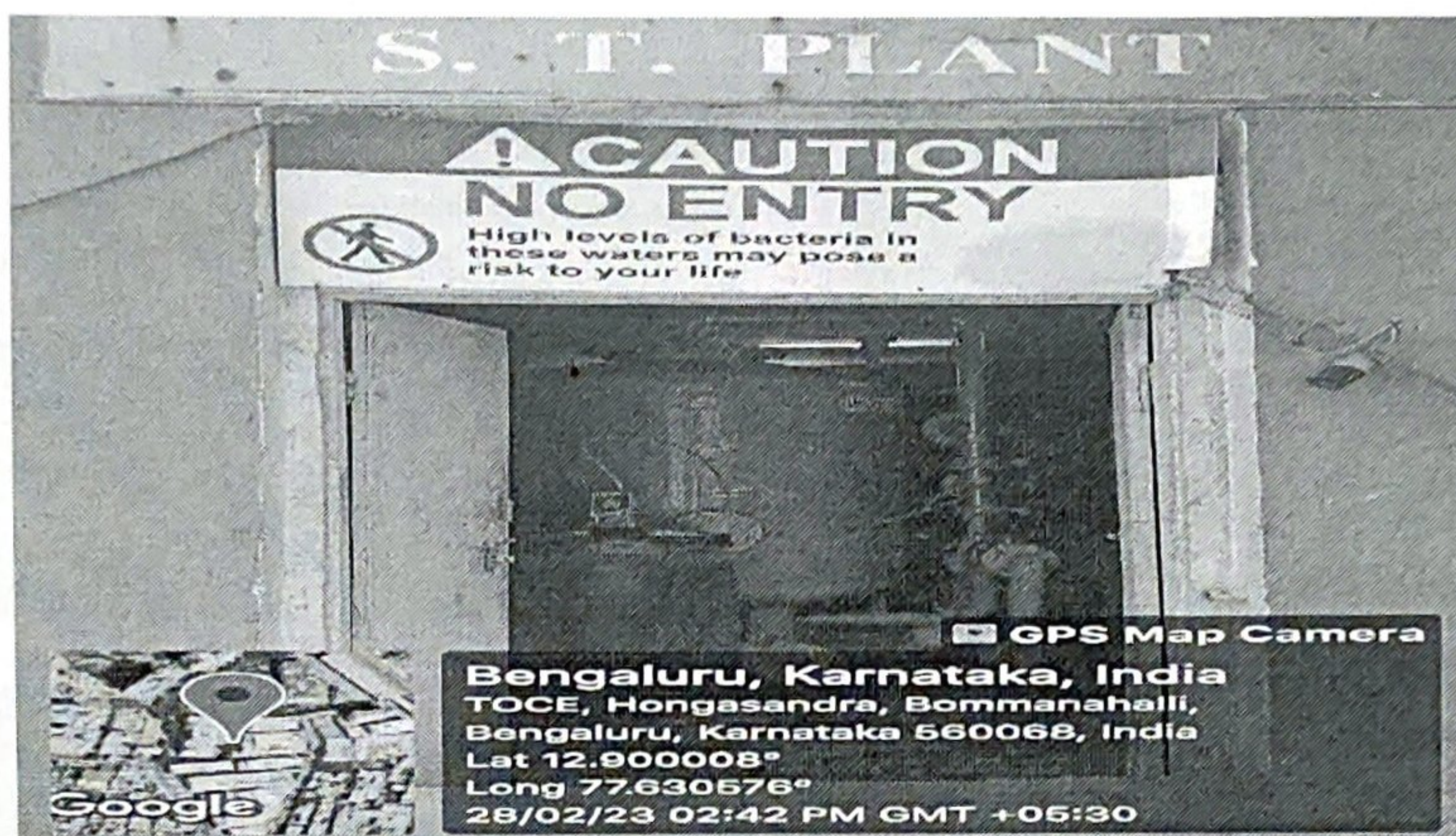
- Washrooms
- Toilets
- Labs
- RO reject

Liquid waste management and disposal in the laboratories of the Oxford College of Pharmacy are strictly governed by procedure. Glassware used in the lab is rinsed with the least amount of water possible and put in the liquid waste container.

Organic and inorganic trash are separated from the liquid waste. Prior to disposal, inorganic waste such as concentrated acidic or alkaline solutions is neutralized. To ensure that no hazardous substances are present in the neutralization liquid, sodium bicarbonate or calcium oxide (lime) are utilized throughout the neutralization process.

The liquid wastes generated in the campus include Sewage, Laboratory, Laundry,

hostel and canteen effluent waste. The above waste is treated through Sewage Treatment Plant (STP) setup in the institution. The entire treated water is used for watering the gardens and lawns maintained in the campus. The sludge settled in the STP is removed and is dried on drying beds and used as manure for the gardens. Therefore, the entire waste water generated in the campus is treated and reused.



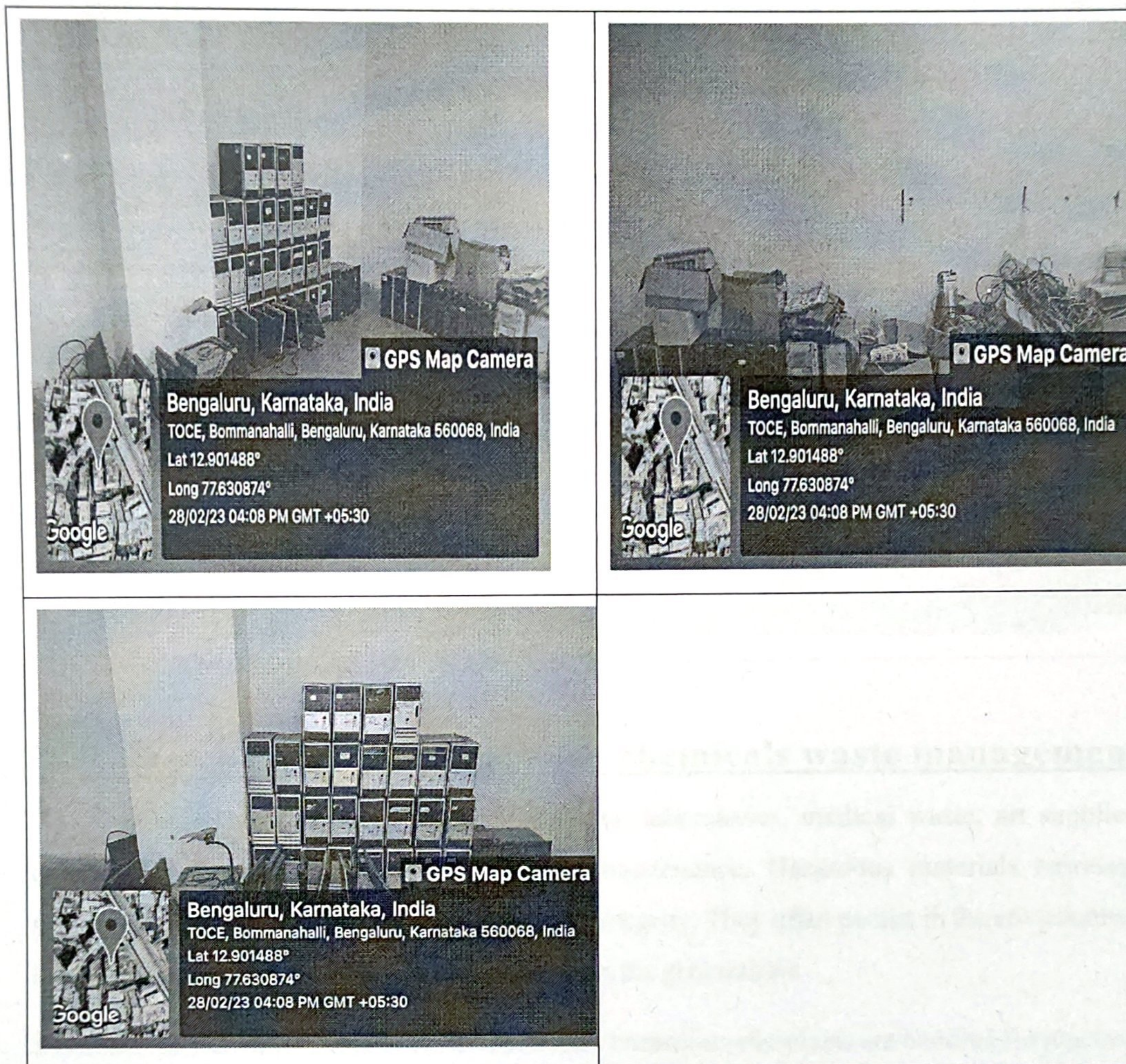
3. Photographs on E- waste Management

We don't have a lot of electronic waste because we are a Pharmacy College, so any kind of electronic waste is produced like keyboard, CPU etc. are handed over to The Oxford Engineering College.

The Engineering College hand over the E-wastes such as electronic components (plastic/metallic) are to agencies which help recycle these materials. E-waste generated in each department is listed and handed over to the facilities manager. Then, the e-waste is disposed through vendors.

The e-waste consists of CPUs, monitors, projectors, motherboards, keyboards, obsolete computer spare parts, mouse etc. The equipment which cannot be refurbished for re-use is dismantled and remanufactured into raw materials (i.e. metals, plastics, glass) to be marketed as recyclable. UPS Batteries are recharged / repaired / exchanged by the suppliers. The waste compact discs and other disposable non- hazardous items are used by students for decoration during college fests as a creative means of showcasing the waste management practice that has

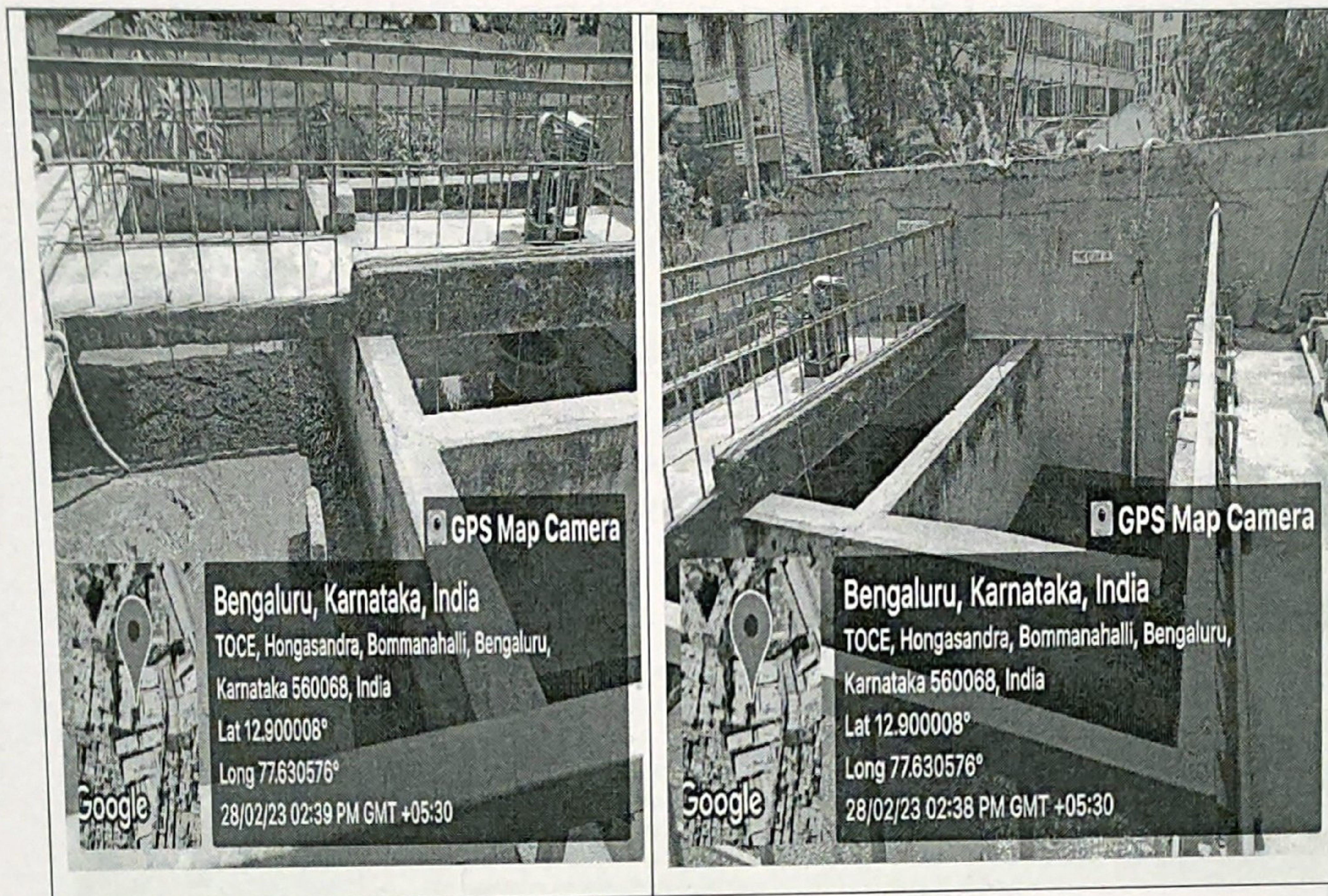
been induced in the minds of the students.



4. Water Recycling System

Water Recycling is the process of treating waste water and putting it back into circulation. The water is treated to filter solids and remove certain contaminants, which can be organic or inorganic. The treatments required depend on the types of contaminants in the water and the desired specification of the purified product.

The waste water from the institute is processed in water recycling system. The purified water is reused for watering of plants and in toilets for flushing.



5. Photographs on Hazardous chemicals waste management

This indicator addresses hazardous waste, laboratories, medical waste, art supplies, colors, dyes and chemicals used in campus maintenance. Hazardous materials represent significant risks to human health and ecological integrity. They often persist in the environment leaving a legacy of land and water contamination for generations.

It is observed that in the department of Chemistry hazardous chemicals are handled for practical purpose and these hazardous chemical wastes are drain out with basin water directly to the garden and producing negative impact on environment. In some extent it produces an air, soil, water pollution.



Children's Education Society (Regd.)

The Oxford College of Pharmacy

(Recognised by the Govt. of Karnataka, Affiliated to Rajiv Gandhi University of Health Sciences, Karnataka; Approved by Pharmacy Council of India, New Delhi)

Accredited by NAAC and International Accreditation Organization (IAO)



6. Bio - Medical Waste Management

All medical waste must be disposed of responsibly, even if it is not considered particularly hazardous in order to reduce the risks of human infection, the spread of infections and the emergence of epidemics, it is important to properly sort and dispose of medical waste. The Bio-Medical waste generated by the institutes are segregated and sorted separately in 3 different bins until further processing by the external vendors.



No.6/9, 1st Cross, Begur Road, Hongasandra, Bengaluru -560 068
☎: +91- 80 - 61754694; Fax: +91- 80 -61754699; www.theoxford.edu
e-mail: pharmacyprincipal@theoxford.edu; info@theoxford.edu;

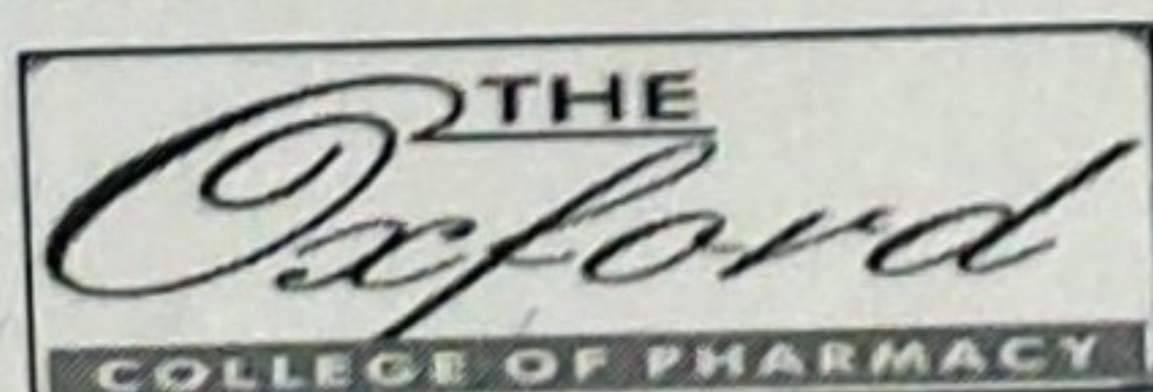
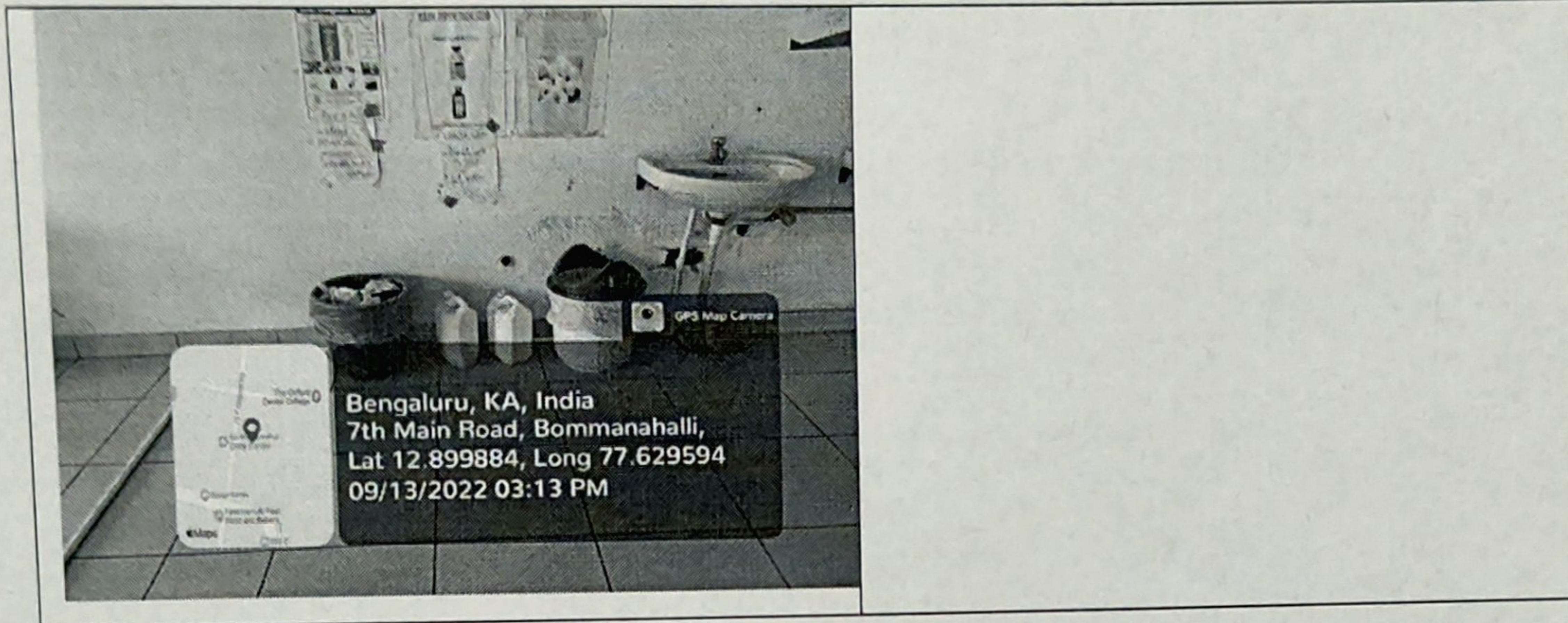


Children's Education Society (Regd.)

The Oxford College of Pharmacy

(Recognised by the Govt. of Karnataka, Affiliated to Rajiv Gandhi University of Health Sciences, Karnataka; Approved by Pharmacy Council of India, New Delhi)

Accredited by NAAC and International Accreditation Organization (IAO)



No.6/9, 1st Cross, Begur Road, Hongasandra, Bengaluru -560 068
☎: +91- 80 - 61754694; Fax: +91- 80 -61754699; www.theoxford.edu
e-mail: pharmacyprincipal@theoxford.edu; info@theoxford.edu;

P. Padmas
PRINCIPAL
The Oxford College Of Pharmacy
No 6/9.1st Cross, Begur Road, Hongasandra
Bangalore - 560 068